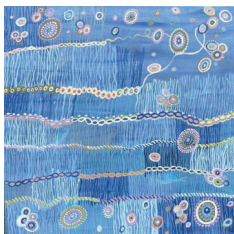
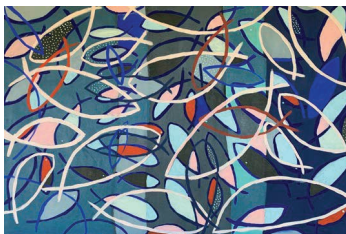




The Hopevale Arts and Cultural Centre was opened in 2009 as an open and accessible space for all Hopevale community members to pursue their interest in art, and to maintain the stories and traditions of the local Guugu-Yimithir culture.



The Centre is often used for community events, meetings and private functions. It is open to the public Monday -Thursday, and throughout peak tourism seasons we run a range of workshops and public talks from the garden of the centre. We sell a range of locally made arts and crafts through the attached Nganthanun Bamawi-Bayan Gallery.



The centre welcomes tourists travelling through the area – free tourist information about the local area is provided by staff at the centre or by our local artists. We welcome you to stop by and make use of our garden and facilities for a lunchtime stopover.

Hope Vale Art & Culture Centre
1 Flierl Street, Hope Vale QLD 4895
Open Mon - Thurs 9am - 4:30pm

(07) 4060 9111
info@hopevaleart.org.au
www.hopevalart.org.au